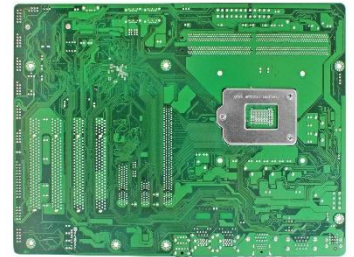




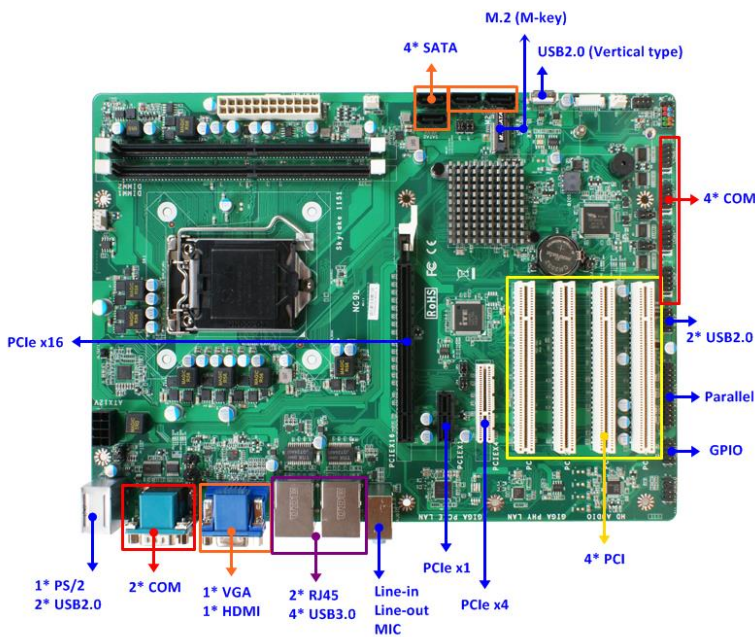
JNC9L-AH110

Intel® Skylake H110 Chip, support LGA1151 CPU, DDR4 up to 64GB, support ATX power input

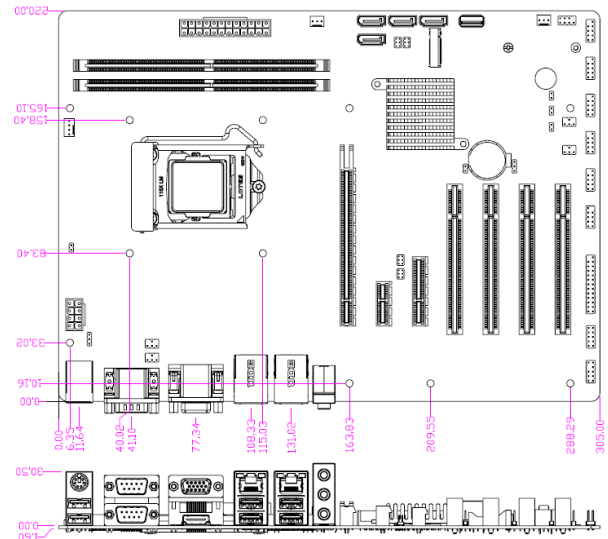
1. Intel® LGA1151 Socket Core i3, i5, i7 Pentium Processor
2. DDR4 2133MHz long-DIMM up to 64 GB
3. 1* Intel® I219LM GbE, 1* Intel® i211AT GbE
4. Support HDMI/VGA, 2* External COM, 4* Internal COM (COM1 support RS232/422/485, COM1/2/3/4 support 5V/12V TTL)
5. 4* USB3.0, 5* USB2.0 (internal USB2 Support Dongle)
6. 1* PCIe x16 Slot, 1* PCIe x4 Slot, 1* PCIe x1 Slot, 4* PCI Slots
7. 1* M.2 socket (Support SSD, 2242/2280)
8. Support TPM2.0 / Audio Codec (optional)
9. ATX power



I/O Diagram



Mechanical Drawings (Unit = mm)



Specifications

Model	Form Factor
<ul style="list-style-type: none">JNC9L-AH110 (with Audio Codec)JNC9LT2-AH110 (with TPM2.0, Audio Codec)JNC9LT2A-AH110 (with TPM2.0)JNC9LTA-AH110	ATX (305 * 220mm)
Processor System	Expansion Slot
<ul style="list-style-type: none">Intel® LGA1151 Series Processor (Max. 100W)H110 chipsetAMI 128M Flash ROM BIOS	<ul style="list-style-type: none">4* PCI1* PCIe x16 slot1* PCIe x4 slot1* PCIe x1 slot1* M.2 (M key, 2242/2280)
Memory	Graphics
2* Long-DIMM DDR4 2133MHz Dual CH SDRAM up to 64GB	<ul style="list-style-type: none">Intel® HD Graphics, shared memory1* VGA (Max. Resolution: 1920x1080@60Hz)1* HDMI 1.4 (Max Resolution: 4096x2304@24Hz)Support Dual Displays
Ethernet	Audio
2* Intel GbE (1* i219LM, 1* i211AT)	HD audio: Realtek ALC888S
SATA	Rear I/O
4* SATAIII (6.0Gb/s, SATA4 Co-lay M.2)	<ul style="list-style-type: none">1* VGA1* HDMI2* RJ454* USB3.0, 2* USB2.0Line-In, Line-Out, MIC2* COM (COM 1 support RS232/422/485, 5/12V TTL)1* PS/2
Internal Connector	Watchdog Timer
<ul style="list-style-type: none">3* USB 2.05* COM (COM3/4 Support 5/12V TTL)4* SATAIII (6.0Gb/s)1* Parallel1* M.2 (M key, 2242/2280)1* GPIO (8 bit)1* Chassis intrusion1* Audio Header1* AT mode	<ul style="list-style-type: none">From Super I/O to drag RESETCON#256 segments (10sec ~ 255min)
Power	Compliance
ATX PWR, AT/ATX Supported - AT : Directly PWR on as Power input ready - ATX: Press Button to PWR on after Power input ready	CE, FCC, RoHS, REACH
Temperature	Warranty
<ul style="list-style-type: none">Operating: 0°C ~ 60°CStorage: -20°C ~ 85°CHumidity : 10% ~ 90% RH @40°C (non-condensing)	2 Years Limited Warranty

* Specifications subject to change without notice, not responsible for typographical errors. Does not include HDD or OS.

Standard Accessories

Parts Number	Description	Parts Number	Description
-----	JNC9L-AH110 M/B	G01-COM9X2-30A-1F	1* COM cable
G01-SATA3-BL-1F	2* SATAIII cable	F04-MB-059-F	I/O Shield