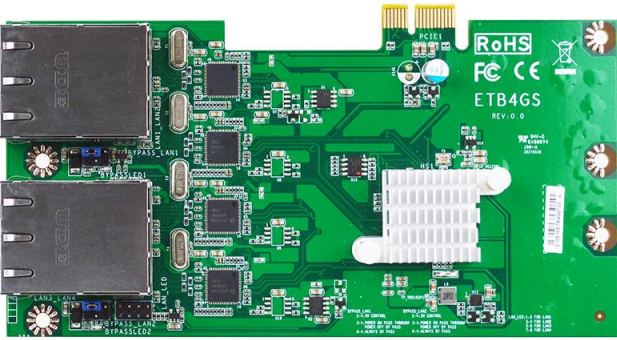


**JETB4GS**



**Dimension**

170 \* 81.9 mm

**Chipset**

Asmedia 1806 PCIe switch

Intel i211AT GbE

**Feature**

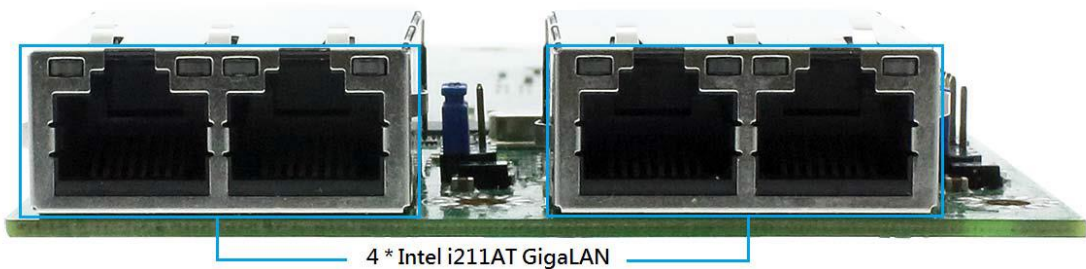
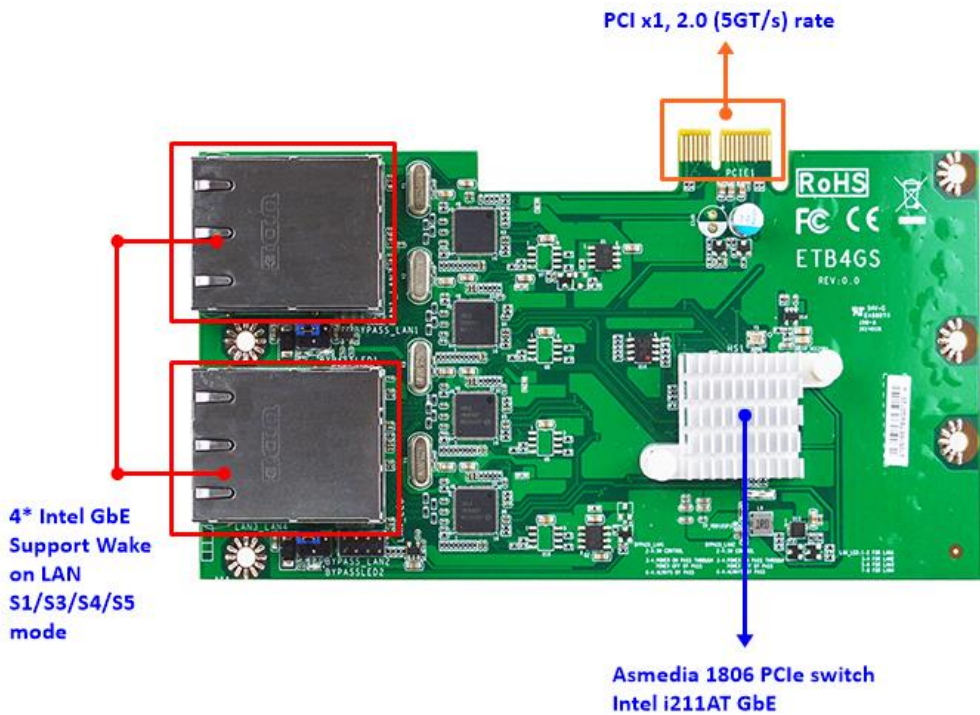
- 1. 4 \* Intel® GbE
- 2. Support Wake on LAN S1/S3/S4/S5 mode

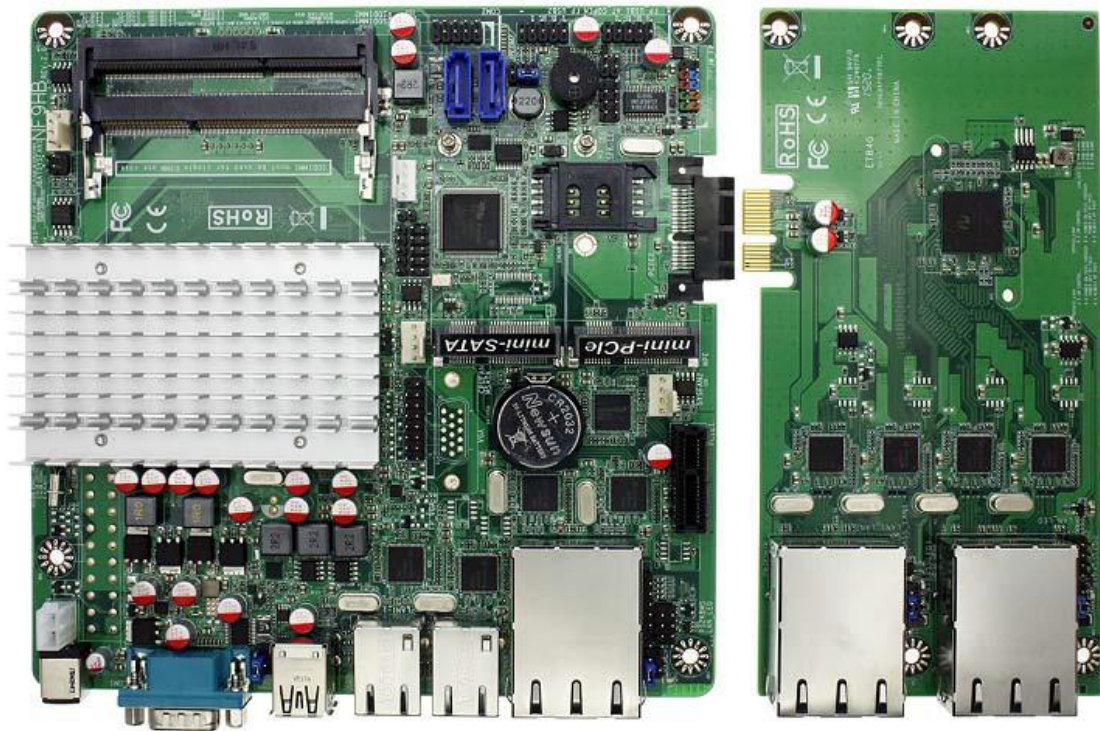
**Interface**

PCIe x 1, 2.0 (5GT/s) rate

**Application**

- 1. VPN
- 2. UTM
- 3. Network bandwidth controller
- 4. Mail spam





The figure shown JETB4GS plug to the JNF9HB-2930



The figure shown the rear I/O

